

CERTIFIED RECORD OF LAND CORNER MONUMENTATION

History of original corner establishment:
New corner

*

DIAGRAM
T10S R31E
S29
E1/16---
S32

Description of corner evidence found:

Description of monument and accessories I establish to perpetuate the original location of this corner:

Set a 2-1/2"x30" aluminum monument 6" in the ground in a mound of stone.

I establish new bearing trees:

A 10" Juniper bears N 47°20' W, 113.4 ft, scribed E1/16S29BT.

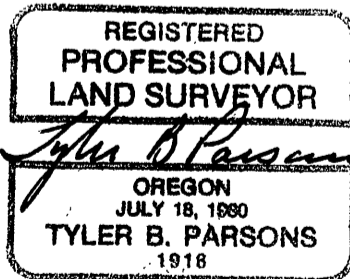
A 9" P.Pine bears S 1°44' E, 189.4 ft, scribed E1/16S32BT.

T10S R31E
S29
E1/16---
S32
PLS1918
1989

Sun Cadastral Survey
Contract No.: 53-04H1-7-4011
Project No.: 8722JB
Field Book: 7-34
Work Accomplished: 4/8/89
Witnesses: Louise Parsons

New BTs have 3/4" brass washers marked PLS1918 attached to the BT blaze, faces and bands painted with red tree marking paint, and BT tags and Attention or Land Survey Monument signs. A steel fence post with Attention or Land Survey Monument sign is driven approximately 3-5 feet from the corner.

PARSONS SURVEYING
1915 S.E. Stone Street
Corvallis, OR 97333
(503) 752-7515



Office of COUNTY SURVEYOR County of GRANT
State of OREGON, I hereby certify that the within instrument was filed in this office
for record on the 26 day of June, 1987

Robert D. Bayart by _____
(COUNTY OFFICIAL) (DEPUTY)